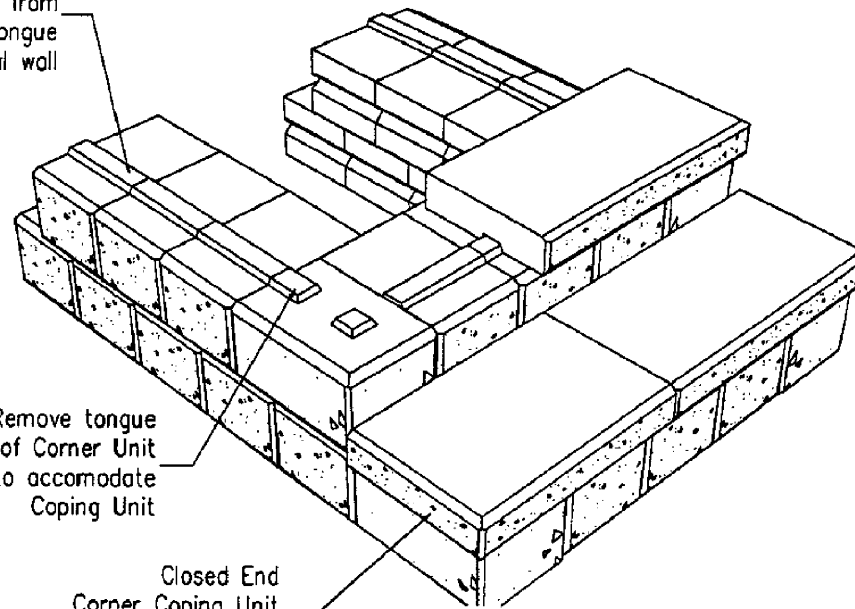


19 (3/4")
Cut from
back of tongue
for vertical wall



Remove tongue
of Corner Unit
to accomodate
Coping Unit

Closed End
Corner Coping Unit
(Cut to fit req.
stair width)

OUTSET STEPS

This structure is constructed in the same manner as the perpendicular steps, one course at a time. But, in this arrangement it is necessary to construct two inside corners which setback at approximately 300mm per course. With the side walls battering toward each other by 19mm per course, each riser will be 38mm narrower than the course below.

Pisa - Outset Steps